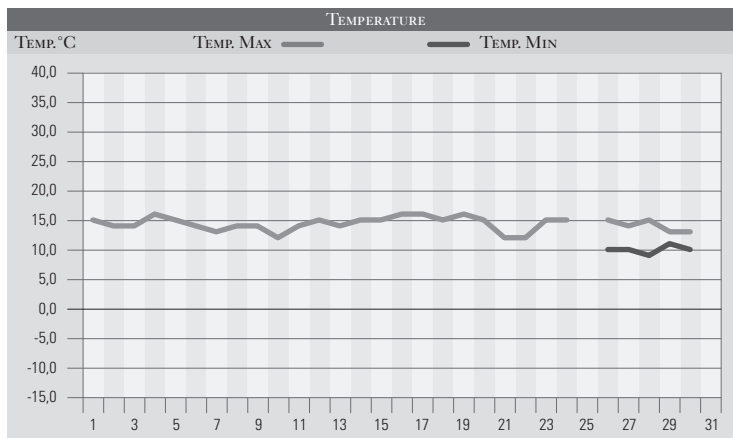


NOVEMBRE 1983

GIORNO	T.MIN	T.MAX	PREC.(mm)	OSSERVAZIONI
1	9,0	15,0		Poco nuvoloso
2	8,0	14,0		Nuvoloso
3	8,0	14,0		Variabile
4	7,0	16,0		Poco nuvoloso
5	6,0	15,0		Sereno, nebbia al mattino
6	7,0	14,0		Nebbia al mattino, poi poco nuvoloso
7	6,0	13,0		Ancora nebbia poi sereno
8	10,0	14,0		Nuvoloso
9	11,0	14,0	25,0	Coperto piogge estese
10	5,0	12,0		Variabile, tempo in miglioramento
11	4,0	14,0		Poco nuvoloso
12	5,0	15,0		Poco nuvoloso
13	4,0	14,0		Sereno, nebbia al mattino
14	6,0	15,0		Sereno, nebbia al mattino
15	6,0	15,0		Sereno, nebbia al mattino
16	8,0	16,0		Variabile
17	9,0	16,0		Nuvoloso
18	10,0	15,0		Nuvoloso da ovest
19	10,0	16,0		Nuvoloso
20	11,0	15,0		Molto nuvoloso
21	10,0	12,0	18,0	Coperto, piogge deboli ma estese e persistenti
22	9,0	12,0		Poco nuvoloso
23	10,0	15,0		Variabile
24	12,0	15,0		Variabile da ovest
25				Poco nuvoloso
26	10,0	15,0		Variabile
27	10,0	14,0		Variabile, continua la siccità
28	9,0	15,0		Poco nuvoloso
29	11,0	13,0		Nuvoloso
30	10,0	13,0		Nuvoloso sempre da ovest senza precipitazioni
31				
MED.TOT.	8,3	14,3	43,0	



RIEPILOGO		
GIORNI DI PIOGGIA	2	Ancora domina la siccità e il deficit delle precipitazioni si fa di mese in mese più preoccupante. Anche per quanto riguarda le temperature quasi nulle sono stati i contrasti termici in un mese dominato dalle alte pressioni atlantiche e dalle correnti occidentali.
TEMPERATURE MIN °C	4,0	
TEMPERATURE MAX °C	16,0	
PIOGGIA MAX 24 H (MM)	25,0	