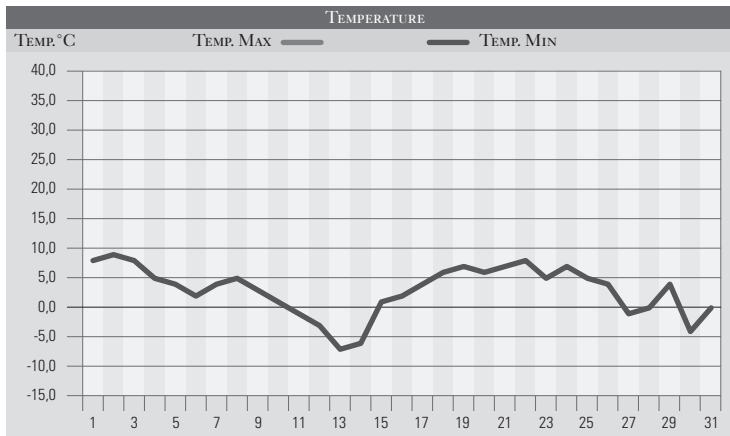


# DICEMBRE 1976

GIORNO	T.MIN	T.MAX	PREC.(mm)	OSSERVAZIONI
1	8,0	12,0	6,0	Coperto, forti venti di libeccio, piogge
2	9,0	11,0	8,0	Violentissimi venti di libeccio, piogge neve/1000m
3	8,0	10,0		Nuvoloso, piovvaschi
4	5,0	8,0	24,0	Coperto, piogge estese
5	4,0	6,0	10,0	Molto nuvoloso, piogge e neve/700m
6	2,0	5,0		Poco nuvoloso, nuvoloso
7	4,0	5,0	2,0	Coperto, piogge deboli
8	5,0	7,0		Poco nuvoloso, nuvoloso
9	3,0	6,0	6,0	Molto nuvoloso, pioggia, neve/1100m
10	1,0	7,0		Poco nuvoloso, sereno
11	-1,0	6,0		Sereno, freddo, venti da nord
12	-3,0	2,0		Sereno, freddo, intenso
13	-7,0	2,0		Forte gelata, poco nuv. brevi neviccate sull'Appennino
14	-6,0	2,0		Gelo, sereno
15	1,0	4,0	3,0	Coperto, piogge deboli, neve/800m
16	2,0	5,0	16,0	Coperto, piogge sparse, neve/1000m
17	4,0	10,0		Nuvoloso, molto nuvoloso
18	6,0	8,0	12,0	Coperto, deboli piogge
19	7,0	8,0	22,0	Molto nuvoloso, coperto, piogge dalla sera
20	6,0	8,0		Sereno, nebbia
21	7,0	8,0		Poco nuvoloso, nebbia
22	8,0	10,0		Molto nuvoloso, venti da nord
23	5,0	10,0		Nuvoloso, poco nuvoloso
24	7,0	11,0		Nuvoloso
25	5,0	7,0	9,0	Coperto, piogge, neve/1000m
26	4,0	6,0	4,0	Coperto, piogge sparse
27	-1,0	7,0		Sereno, ritorno del freddo
28	0,0	5,0		Nuvoloso, sporadica nevicata
29	4,0	6,0	16,0	Coperto, piogge con neve/600 estesa
30	-4,0	4,0		Nebbia e gelo
31	0,0	6,0	2,0	Molto nuvoloso, deboli piogge
<b>MED.TOT.</b>	<b>3,0</b>	<b>6,8</b>	<b>140,0</b>	



RIEPILOGO		
GIORNI DI PIOGGIA	14	Mese ancora molto perturbato che conclude un ciclo davvero anomalo per la nostra reg. che ha visto, dal mese di luglio, un continuo prevalere di periodi perturbati e piovosi con grande beneficio per le sorgenti, ma con notevoli danni all'agricoltura e alle infrastrutture.
TEMPERATURE MIN°C	-7,0	
TEMPERATURE MAX°C	12,0	
PIOGGIA MAX 24h (MM)	24,0	