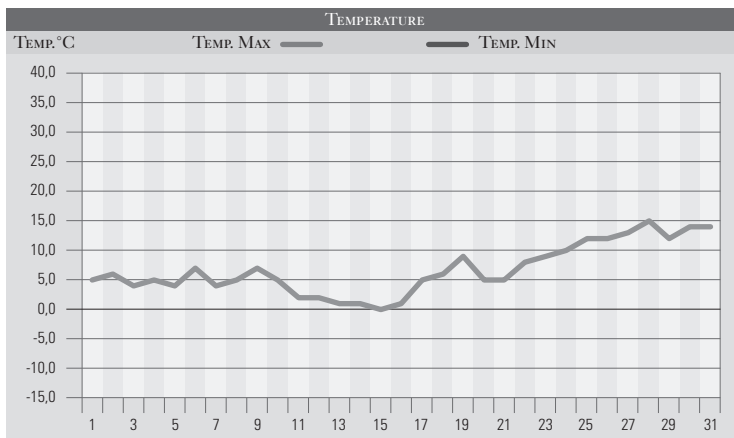


# GENNAIO 1990

GIORNO	T.MIN	T.MAX	PREC.(mm)	OSSERVAZIONI
1	-2,0	5,0		Sereno, brinate, alta pressione russa
2	-3,0	6,0		Sereno, gelate
3	-5,0	4,0		Sereno, gelate con galaverna
4	0,0	5,0		Sereno, brinate
5	0,0	4,0		Sereno, brinate, alta pressione in trasferimento ad est
6	0,0	7,0		Nuvolosità stratificata
7	3,0	4,0	4,0	Precipitazioni sparse, intense a sud-ovest, neve/700m
8	4,0	5,0	17,0	Precipitazioni intense in mattinata, neve/600m
9	2,0	7,0		Tempo in lento miglioramento in serata
10	-3,0	5,0		Brina, sereno, poi variabile
11	-2,0	2,0		Nebbia
12	-2,0	2,0		Nebbia
13	-2,0	1,0		Nebbia
14	-3,0	1,0		Nebbia e gelo
15	-4,0	0,0		Nebbia e gelo persistenti
16	-5,0	1,0		Nebbia (galaverna estesa)
17	-5,0	5,0		Nebbia (galaverna estesa)
18	-1,0	6,0		Brina, poco nuvoloso
19	1,0	9,0		Poco nuvoloso, tramontana debole
20	-4,0	5,0		Brina, poco nuvoloso
21	-3,0	5,0		brina, sereno
22	-5,0	8,0		Sereno, gelate
23	-4,0	9,0		Gelate al mattino, sereno
24	-3,0	10,0		Poco nuvoloso
25	1,0	12,0		Variabile (uragano nel nord-ovest Europa, 100 morti)
26	5,0	12,0		Nuvolosità variabile
27	3,0	13,0		Variabile da nord-ovest
28	11,0	15,0		Coperto, caldo da sud
29	10,0	12,0	20,0	Coperto con piogge sparse, anche temporalesche
30	11,0	14,0		Nuvoloso
31	9,0	14,0		Nuvolosità stratificata
Med.Tot.	0,1	6,7	41,0	



RIEPILOGO		
GIORNI DI PIOGGIA	3	Mese freddo con poche precipitazioni e forti gelate per le prime due decadi, poi caldo fuori dalla norma nell'ultima settimana per correnti meridionali.
TEMPERATURE MIN °C	-5,0	
TEMPERATURE MAX °C	15,0	
PIOGGIA MAX 24 H (MM)	20,0	