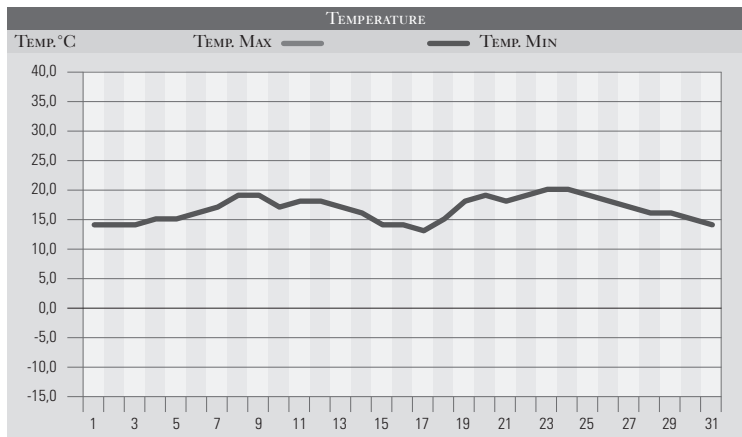


LUGLIO 1991

GIORNO	T.MIN	T.MAX	PREC.(mm)	OSSERVAZIONI
1	14,0	26,0		Sereno, fresco
2	14,0	27,0		Sereno
3	14,0	29,0		Sereno, temperatura in aumento
4	15,0	30,0		Sereno
5	15,0	31,0		Sereno o poco nuvoloso
6	16,0	32,0		Sereno
7	17,0	33,0		Sereno, caldo
8	19,0	35,0		Sereno, ulteriore aumento della temperatura
9	19,0	34,0		Sereno, caldo
10	17,0	35,0		Sereno, caldo, temporali pomeridiani lungo l'App.
11	18,0	32,0		Sereno, temporali pomeridiani lungo l'Appennino
12	18,0	33,0		Sereno, caldo, temporali pomeridiani ad est
13	17,0	32,0		Sereno, caldo
14	16,0	27,0	15,0	Temporale, alluvione a Pietralunga, Montone
15	14,0	24,0		Sereno, vento di tramontana fresco
16	14,0	28,0		Sereno, fresco
17	13,0	30,0		Sereno
18	15,0	31,0		Sereno o poco nuvoloso
19	18,0	33,0		Sereno, temperatura in aumento
20	19,0	35,0		Sereno, caldo
21	18,0	30,0		Sereno, calo della temperatura
22	19,0	34,0		Sereno, temperatura in aumento
23	20,0	35,0		Sereno, caldo
24	20,0	35,0		Sereno,
25	19,0	32,0	30,0	Forte nubifragio su PG est, Pretola, P. Valleceppi
26	18,0	29,0		Nuvolosità variabile
27	17,0	28,0		Poco nuvoloso
28	16,0	27,0		Nuvolosità variabile
29	16,0	28,0		Sereno
30	15,0	30,0		Sereno, aumento della nuvolosità da ovest
31	14,0	28,0	25,0	Forte Temporale su quasi tutta la reg., specie sul PG
MED.TOT.	16,6	30,7	70,0	



RIEPILOGO			
GIORNI DI PIOGGIA	3	Mese sostanzialmente in linea con le medie del periodo, con episodi di caldo moderato interrotti da forti temporali che hanno contribuito a precipitazioni leggermente superiori alle medie.	
TEMPERATURE MIN °C	13,0		
TEMPERATURE MAX °C	35,0		
PIOGGIA MAX 24h (MM)	30,0		