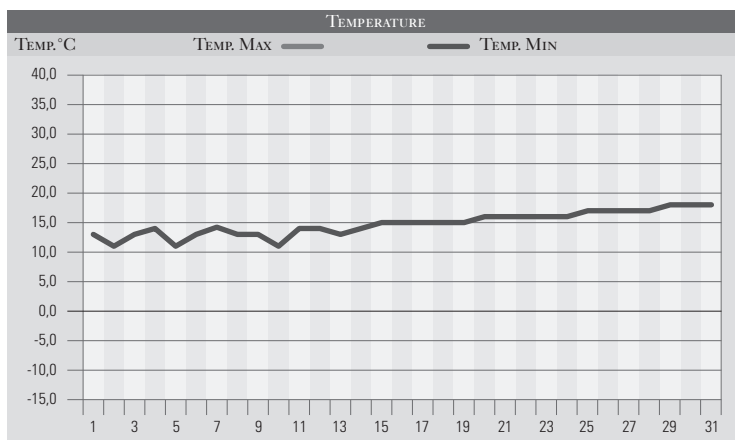


LUGLIO 1992

GIORNO	T.MIN	T.MAX	PREC.(mm)	OSSERVAZIONI
1	13,0	28,0		Variabile pioviggini in serata
2	11,0	23,0		Rovesci sparsi anche forti, a PG-S. Sisto
3	13,0	28,0		Sereno
4	14,0	29,0		Lento peggioramento
5	11,0	20,0	26,0	Temporali al mattino, nubifragio (Corciano, Solfagnano)
6	13,0	23,0		Nuvolosità variabile
7	14,0	22,0	8,0	Variabile, temporale nel Perugino alle 14,00
8	13,0	23,0		Nuvolosità variabile
9	13,0	24,0		Poco nuvoloso
10	11,0	22,0		Nuvolosità variabile
11	14,0	21,0	15,0	Giornata autunnale, piogge forti a nord-ovest
12	14,0	22,0	2,0	nuvolosità variabile, piovvaschi pomeridiani
13	13,0	25,0		Nuvolosità variabile
14	14,0	30,0		Sereno
15	15,0	30,0		Sereno o poco nuvoloso
16	15,0	30,0		Sereno
17	15,0	31,0		Sereno o poco nuvoloso
18	16,0	32,0		Sereno, caldo
19	15,0	31,0		Sereno o poco nuvoloso
20	16,0	32,0		Sereno
21	16,0	32,0		Sereno, aumento del tasso di umidità
22	16,0	32,0		Sereno
23	16,0	32,0		Sereno o poco nuvoloso
24	16,0	33,0		Sereno
25	17,0	33,0		Sereno, gran caldo
26	17,0	33,0		Sereno, nuvoloso sull'Appennino
27	17,0	34,0		Sereno o poco nuvoloso
28	17,0	35,0		Sereno
29	18,0	35,0		Sereno, ancora gran caldo
30	18,0	33,0		Sereno o poco nuvoloso
31	18,0	35,0		Sereno
MED.TOT.	14,8	28,8	51,0	



RIEPILOGO

GIORNI DI PIOGGIA	4	Mese a due facce, con una prima parte di stampo quasi primaverile-autunnale con frequenti precipitazioni e temperature fresche, seguita da una progressiva intensificazione del caldo via via più intenso verso la fine del mese. Precipitazioni in linea con le medie del periodo.
TEMPERATURE MIN °C	11,0	
TEMPERATURE MAX °C	35,0	
PIOGGIA MAX 24H (MM)	26,0	