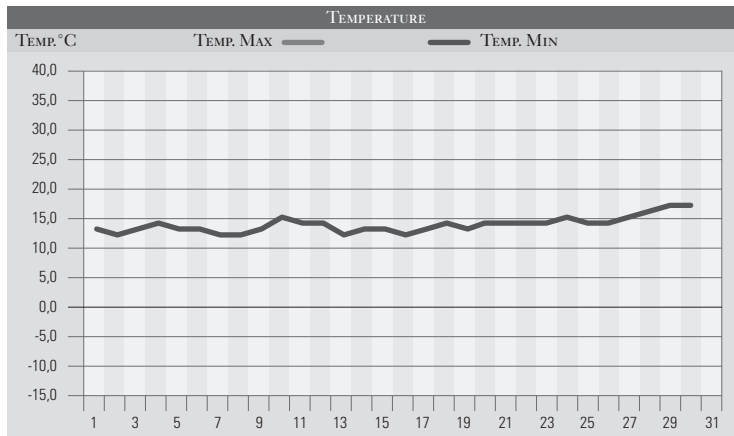


GIUGNO 1994

GIORNO	T.MIN	T.MAX	PREC.(mm)	OSSERVAZIONI
1	13,0	27,0		Sereno
2	12,0	28,0		Sereno o poco nuvoloso
3	13,0	27,0		Sereno
4	14,0	28,0		Sereno o poco nuvoloso
5	13,0	27,0		Sereno
6	13,0	26,0		Sereno o poco nuvoloso
7	12,0	26,0		Sereno
8	12,0	25,0		Variabile
9	13,0	25,0		Nuvolosità variabile
10	15,0	23,0	1,0	Variabile, piovaschi
11	14,0	20,0	20,0	Coperto dal pomeriggio, piogge estese, rovesci
12	14,0	19,0	5,0	Rovesci sparsi
13	12,0	21,0		Variabile
14	13,0	23,0		Sereno
15	13,0	24,0		Sereno o poco nuvoloso
16	12,0	24,0		Sereno
17	13,0	24,0		Sereno o poco nuvoloso
18	14,0	25,0		Sereno
19	13,0	27,0		Sereno o poco nuvoloso
20	14,0	27,0		Sereno o poco nuvoloso
21	14,0	28,0		Sereno
22	14,0	27,0		Sereno o poco nuvoloso
23	14,0	28,0		Sereno
24	15,0	24,0	4,0	Temporalì sparsi, specie ad est di PG
25	14,0	23,0	4,0	Rovesci sparsi da ovest di PG
26	14,0	24,0	2,0	Piovaschi sparsi, tendenza a miglioramento
27	15,0	30,0		Sereno, caldo
28	16,0	32,0		Sereno
29	17,0	33,0		Sereno, caldo
30	17,0	34,0		Sereno
31				
MED.TOT.	13,7	26,0	36,0	



RIEPILOGO		
GIORNI DI PIOGGIA	6	Mese sostanzialmente stabile e con precipitazioni inferiori alle medie, concentrate in due episodi perturbati nella seconda e terza decade del mese.
TEMPERATURE MIN °C	12,0	
TEMPERATURE MAX °C	34,0	
PIOGGIA MAX 24h (mm)	20,0	