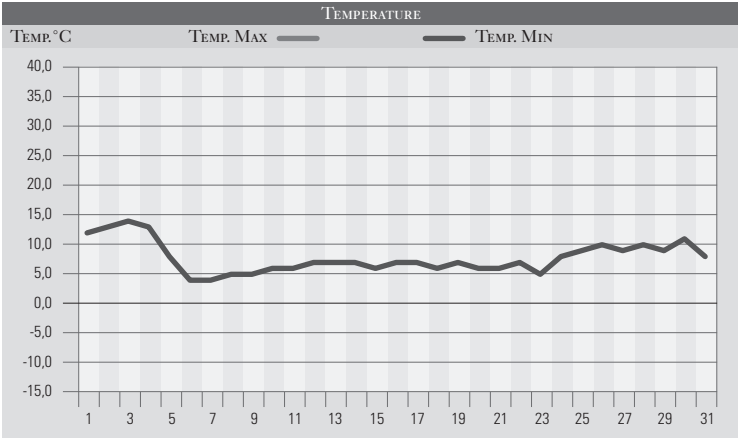


OTTOBRE 1994

GIORNO	T.MIN	T.MAX	PREC.(mm)	OSSERVAZIONI
1	12,0	23,0	11,0	Variabile, forte temporale al pomeriggio
2	13,0	22,0	19,0	Coperto con piogge sparse, temporali in mattinata
3	14,0	21,0	14,0	Piogge estese nella mattinata
4	13,0	19,0	15,0	Breve temporale
5	8,0	10,0		Nuvoloso, freddo
6	4,0	8,0		nuvoloso, freddo intenso
7	4,0	7,0		Nuvolosità variabile, freddo intenso
8	5,0	9,0		Variabile
9	5,0	10,0		Nuvolosità Variabile
10	6,0	12,0		Sereno
11	6,0	12,0		Sereno o poco nuvoloso
12	7,0	15,0		Sereno
13	7,0	14,0		Sereno
14	7,0	15,0		Sereno o poco nuvoloso
15	6,0	13,0		Sereno
16	7,0	14,0		Sereno o poco nuvoloso
17	7,0	15,0		Sereno, nuvoloso al pomeriggio
18	6,0	13,0		Sereno o poco nuvoloso
19	7,0	14,0		Sereno, tempo in peggioramento
20	6,0	15,0		Nuvoloso, freddo da nord
21	6,0	13,0		Variabile da nord
22	7,0	12,0		Sereno
23	5,0	14,0		Sereno, peggioramento dal pomeriggio
24	8,0	11,0	38,0	Piogge estese ed intense nella notte
25	9,0	15,0		Variabile
26	10,0	14,0	1,0	Piovaschi nella notte
27	9,0	15,0		Variabile
28	10,0	14,0	9,0	Variabile con esteso temporale in mattinata
29	9,0	13,0		Variabile
30	11,0	14,0	12,0	Coperto con piogge estese in mattinata
31	8,0	12,0		Nuvolosità Variabile
MED.TOT.	7,8	13,8	119,0	



RIEPILOGO		
GIORNI DI PIOGGIA	8	Mese autunnale con precipitazioni copiose e frequenti, al di sopra delle medie del periodo. Temperature abbastanza in linea con la norma.
TEMPERATURE MIN °C	4,0	
TEMPERATURE MAX °C	23,0	
PIOGGIA MAX 24h (MM)	38,0	