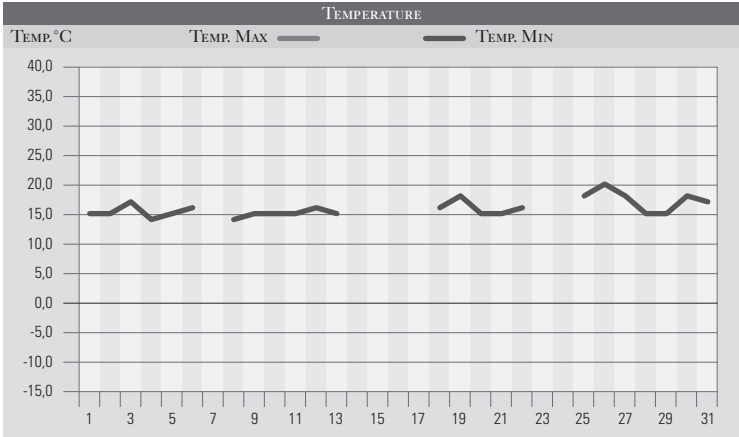


LUGLIO 1996

GIORNO	T.MIN	T.MAX	PREC.(mm)	OSSERVAZIONI
1	15,0	28,0		Sereno
2	15,0	28,0		Variabile
3	17,0	25,0	5,0	Coperto, brevi piogge in mattinata, variabile il pom.
4	14,0	27,0		Poco nuvoloso
5	15,0	28,0		Poco nuvoloso
6	16,0	30,0		Sereno, nubi cumuliformi a ridosso dei rilievi
7		29,0		Poco nuvoloso, venti deboli da nord-ovest
8	14,0	29,0		Poco nuvoloso
9	15,0	27,0		Sereno, temperature fresche
10	15,0	28,0		Cielo prevalentemente sereno
11	15,0	29,0		Cielo nuvoloso per attività cumuliforme
12	16,0	29,0		Da poco nuvoloso a sereno
13	15,0	30,0		Sereno per l'alta pressione continentale
14		30,0		Sereno, venti deboli orientali
15		31,0		Cielo sereno, temperature gradevoli
16		30,0		Cielo sereno
17		29,0		Sereno
18	16,0	29,0		Poco nuvoloso
19	18,0	24,0	12,0	Nuvoloso, locale temporale pomeridiano
20	15,0	28,0		Poco nuvoloso, attività cumuliforme pomeridiana
21	15,0	28,0		Poco nuvoloso
22	16,0	29,0		Poco nuvoloso
23		32,0		Sereno, temperature in aumento
24		33,0		Poco nuvoloso, caldo
25	18,0	34,0		Velato, caldo opprimente
26	20,0	33,0		Sereno, sempre molto caldo
27	18,0	31,0		Poco nuvoloso
28	15,0	27,0		Variabile per correnti più fresche da nord-ovest
29	15,0	28,0		Variabile
30	18,0	25,0	10,0	Nuvoloso, temporale il pom con forti colpi di vento
31	17,0	27,0		Poco nuvoloso
MED.TOT.	16,0	28,9	27,0	



RIEPILOGO		
GIORNI DI PIOGGIA	3	Mese tipicamente estivo con scarse precipitazioni.
TEMPERATURE MIN °C	14,0	
TEMPERATURE MAX °C	34,0	
PIOGGIA MAX 24h (mm)	12,0	