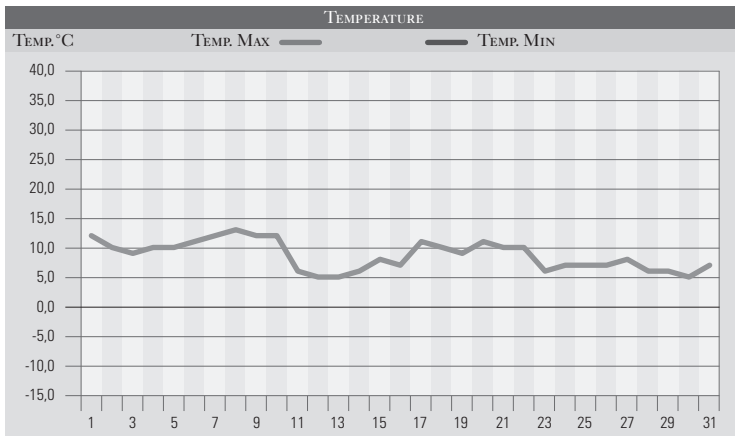


GENNAIO 1998

GIORNO	T.MIN	T.MAX	PREC.(mm)	OSSERVAZIONI
1	2,0	12,0		Da sereno a poco nuvoloso
2	1,0	10,0	6,0	Coperto, deboli venti da sud, piovigini in serata
3	6,0	9,0		Nuvoloso, tendenza ad ulteriori schiarite
4	0,0	10,0		Poco nuvoloso
5	2,0	10,0		Sereno
6	3,0	11,0		Sereno, assenza di vento
7	7,0	12,0		Variabile, caldo soprattutto in montagna
8	8,0	13,0		Variabile
9	4,0	12,0		Sereno, alta pressione in ulteriore consolidamento
10	3,0	12,0		Sereno
11	1,0	6,0		Poco nuvoloso
12	4,0	5,0		Nebbia al mattino in parziale dissolvimento
13	4,0	5,0		Nebbia al mattino in parziale dissolvimento
14	4,0	6,0		Nebbia al mattino, cielo da poco nuvoloso a coperto
15	7,0	8,0	12,0	Coperto con deboli piogge in intensificazione
16	5,0	7,0		Nebbia densa e persistente
17	7,0	11,0	2,0	Variabile con isolati piovaschi da ovest
18	6,0	10,0		Poco nuvoloso, peggioramento da sud-ovest
19	8,0	9,0	16,0	Coperto con piogge in intensificazione
20	7,0	11,0	2,0	Residue precipitazioni, aperture dal pomeriggio
21	7,0	10,0	2,0	Molto nuv., deboli piogge, calo delle temperature
22	7,0	10,0		Da poco nuvoloso a sereno
23	0,0	6,0		Sereno
24	-2,0	7,0		Sereno, venti deboli da nord-est
25	-1,0	7,0		Poco nuvoloso
26	-2,0	7,0		Sereno, calma di vento
27	-2,0	8,0		Sereno, estese gelate al mattino
28	-4,0	6,0		Sereno, intensa gelata
29	-3,0	6,0		Poco nuvoloso, freddo al mattino
30	-3,0	5,0		Nuv.-coperto, venti da sud-ovest, temp. in rialzo
31	5,0	7,0	21,0	Coperto, piogge estese e localmente abbondanti
MED.TOT.	2,9	8,6	61,0	



RIEPILOGO		
GIORNI DI PIOGGIA	7	Mese invernale con temperature mai troppo basse, nella norma le precipitazioni.
TEMPERATURE MIN °C	-4,0	
TEMPERATURE MAX °C	13,0	
PIOGGIA MAX 24H (MM)	21,0	