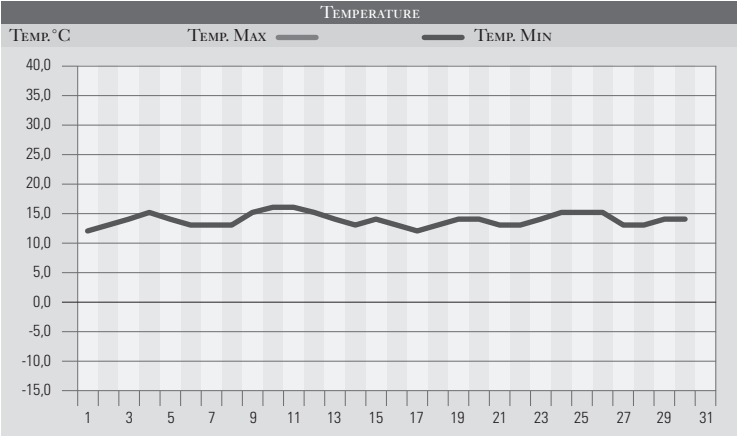


GIUGNO 1978

GIORNO	T.MIN	T.MAX	PREC.(mm)	OSSERVAZIONI
1	12,0	23,0	2,0	Variabile, temporale settore nord-ovest della reg.
2	13,0	22,0		Variabile
3	14,0	23,0		Sereno
4	15,0	24,0		Sereno, temperatura in aumento
5	14,0	26,0		Sereno
6	13,0	27,0		Sereno
7	13,0	27,0		Sereno
8	13,0	26,0		Sereno
9	15,0	24,0		Variabile
10	16,0	27,0		Variabile, caldo afoso
11	16,0	26,0	41,0	Violentissimo temporale a Perugia e area nord-est
12	15,0	26,0		Variabile, ancora rovesci e temporali
13	14,0	25,0	15,0	Variabile, temporale forte
14	13,0	26,0		Variabile, forte umidità
15	14,0	25,0	48,0	Molto nuvoloso, temporale con piogge torrenziali
16	13,0	27,0	2,0	Piovaschi (piena del Tevere)
17	12,0	24,0		Variabile, nuvoloso venti da sud
18	13,0	23,0		Poco nuvoloso, variabile
19	14,0	25,0		Variabile
20	14,0	24,0		Poco nuvoloso
21	13,0	25,0	5,0	Nuvoloso al mattino, temporale
22	13,0	26,0		Poco nuvoloso
23	14,0	23,0		Poco nuvoloso, venti da sud
24	15,0	27,0		Variabile, venti meridionali forti
25	15,0	28,0		Poco nuvoloso
26	15,0	29,0		Sereno
27	13,0	28,0	5,0	Coperto, pioggia estesa ma debole
28	13,0	27,0		Sereno, bella giornata
29	14,0	27,0		Poco nuvoloso-variabile
30	14,0	28,0		Poco nuvoloso
31				
MED.TOT.	13,8	25,6	118,0	



RIEPILOGO		
GIORNI DI PIOGGIA	7	Anche giugno è stato fortemente instabile e perciò conferma l'anomalia di una stagione piovosa con temperature decisamente inferiori alle medie del periodo. Ancora da segnalare una notevole piena del Tevere il 16 giugno, in piena estate meteorologica.
TEMPERATURE MIN°C	12,0	
TEMPERATURE MAX°C	29,0	
PIOGGIA MAX 24 H (MM)	48,0	