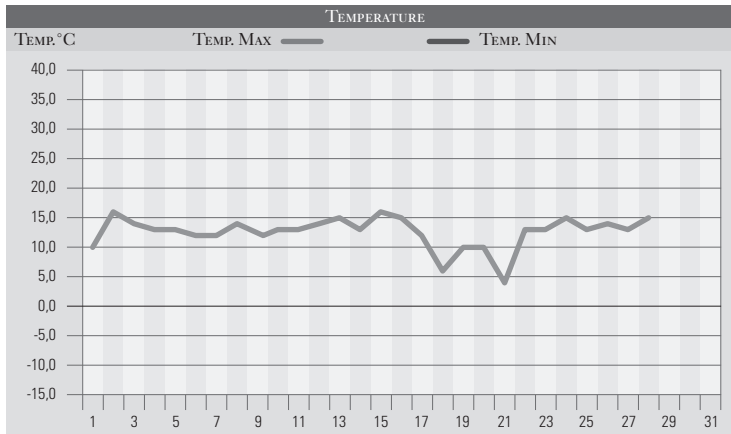


FEBBRAIO 2002

GIORNO	T.MIN	T.MAX	PREC.(mm)	OSSERVAZIONI
1	8,0	10,0	1,0	Coperto, deboli piogge in mattinata
2	0,0	16,0		Sereno, giornata primaverile
3	-1,0	14,0		Sereno
4	-1,0	13,0		Da sereno a variabile
5	4,0	13,0		Variabile, peggioramento da ovest
6	7,0	12,0	9,0	Coperto, venti di libeccio, piogge estese dal pom.
7	6,0	12,0	1,0	Residui piovaschi in mattinata, poi variabile
8	8,0	14,0		Velato da sud-ovest, caldo
9	2,0	12,0		Nebbia il mattino in rapido dissolvimento
10	8,0	13,0		Coperto al mattino, variabile da ovest il pomeriggio
11	3,0	13,0		Nebbia il mattino, in sollevamento il pomeriggio
12	1,0	14,0		Poco nuvoloso
13	6,0	15,0		Poco nuvoloso
14	9,0	13,0		Variabile da sud-est
15	7,0	16,0	2,0	Variabile da sud, pioviggini in serata
16	8,0	15,0	4,0	Variabile da sud, piogge sparse in mattinata
17	6,0	12,0	4,0	Variabile da sud con isolati piovaschi
18	7,0	6,0	18,0	Piogge estese in mattinata, miglioramento in giornata
19	7,0	10,0		Poco nuvoloso
20	6,0	10,0		Variabile
21	8,0	4,0	15,0	Coperto, piogge sparse e locali temporali
22	1,0	13,0		Da sereno a poco nuvoloso
23	6,0	13,0		Variabile
24	1,0	15,0		Variabile in mattinata, sereno il pomeriggio
25	-2,0	13,0		Da variabile a nuvoloso
26	5,0	14,0		Variabile da ovest, venti moderati da sud-ovest
27	7,0	13,0		Variabile da ovest, venti moderati da sud-ovest
28	7,0	15,0		Variabile da ovest
29				
30				
31				
MED.TOT.	4,8	12,6	54,0	



RIEPILOGO		
GIORNI DI PIOGGIA	8	Mese dalla caratteristiche quasi primaverili, precipitazioni leggermente inferiori alle medie.
TEMPERATURE MIN °C	-2,0	
TEMPERATURE MAX °C	16,0	
PIOGGIA MAX 24h (MM)	18,0	