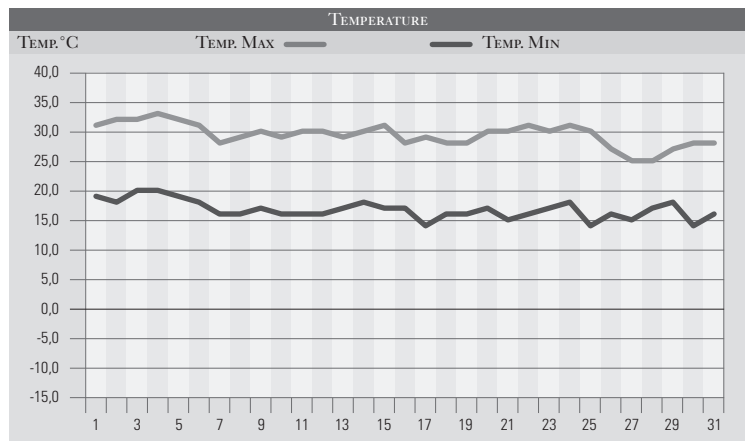


AGOSTO 1978

| GIORNO | T.MIN | T.MAX | PREC.(mm) | OSSERVAZIONI |
|----------|-------|-------|-----------|---|
| 1 | 19,0 | 31,0 | | Sereno, alta pressione |
| 2 | 18,0 | 32,0 | | Sereno-tempo stabile e soleggiato |
| 3 | 20,0 | 32,0 | | Sereno |
| 4 | 20,0 | 33,0 | | Sereno, caldo |
| 5 | 19,0 | 32,0 | | Sereno |
| 6 | 18,0 | 31,0 | | Sereno, poco nuvoloso |
| 7 | 16,0 | 28,0 | 1,0 | Temporale sull'Appennino, variabile, venti da sud |
| 8 | 16,0 | 29,0 | | Poco nuvoloso |
| 9 | 17,0 | 30,0 | | Nuvoloso |
| 10 | 16,0 | 29,0 | | Variabile, miglioramento e nuova stabilità |
| 11 | 16,0 | 30,0 | | Sereno |
| 12 | 16,0 | 30,0 | | Sereno |
| 13 | 17,0 | 29,0 | | Sereno |
| 14 | 18,0 | 30,0 | | Sereno |
| 15 | 17,0 | 31,0 | | Poco nuvoloso |
| 16 | 17,0 | 28,0 | 10,0 | Nuvoloso, temporale breve |
| 17 | 14,0 | 29,0 | | Nuova stabilità, poco nuvoloso |
| 18 | 16,0 | 28,0 | | Sereno aumento della pressione |
| 19 | 16,0 | 28,0 | | Sereno |
| 20 | 17,0 | 30,0 | | Sereno |
| 21 | 15,0 | 30,0 | | Poco nuvoloso |
| 22 | 16,0 | 31,0 | | Sereno |
| 23 | 17,0 | 30,0 | | Sereno-variabile verso sera |
| 24 | 18,0 | 31,0 | 15,0 | Nuvoloso, molto nuv., piogge e temporali sparsi |
| 25 | 14,0 | 30,0 | | Variabile |
| 26 | 16,0 | 27,0 | | Poco nuvoloso |
| 27 | 15,0 | 25,0 | | Variabile |
| 28 | 17,0 | 25,0 | | Variabile, rovesci sparsi |
| 29 | 18,0 | 27,0 | | Poco nuvoloso |
| 30 | 14,0 | 28,0 | | Sereno |
| 31 | 16,0 | 28,0 | | Variabile |
| MED.TOT. | 16,7 | 29,4 | 26,0 | |



| RIEPILOGO | | |
|----------------------|------|--|
| GIORNI DI PIOGGIA | 3 | Mese prettamente estivo con scarse precipitazioni, inferiori alle medie di agosto e grande stabilità dell'atmosfera anche se non vi sono registrate particolari ondate di caldo. |
| TEMPERATURE MIN °C | 14,0 | |
| TEMPERATURE MAX °C | 33,0 | |
| PIOGGIA MAX 24h (mm) | 15,0 | |